

Spring, 2009



**GEOD Offers You:**

- Photogrammetric Mapping
- Land & Engineering Surveying
- Construction Surveys
- GIS Base Mapping
- Subsurface Utility Mapping

**Inside this issue:**

Newark Bay-Hudson Co. Extension	2
NYC DDC On-Call	2
NJTA Interchanges 16E-18E	2
English Creek Bridge Replacement	2
Stewart Airport	2
Kane Tract	2
Rt 37 Over Barne-gat Bay	3
NYSDOT Region 11 On-Call	3
Rt 17 Bottleneck	3
Palisades Avenue Bridge	3
NYC Transit On-Call	3
Awards & Achievements	3
GEOD's Puzzle	4



**GEOD** CORPORATION

AERIAL PHOTOGRAMMETRY • LAND SURVEYING

# INNOVATOR

## Your Project Is Safe with GEOD!



Just as baseball fans worldwide look forward to the season opener, GEOD's project managers likewise approach mid-March through mid-April with childlike excitement and enthusiasm.

And, while it can never be too early to schedule your aerial photographic projects, the best

possible flight conditions are now in full swing!

No need for extensive spring training for this team, most members are seasoned professionals with years of experience under their belts. A simple warm up and the team steps up to the plate, exerting every effort to make every project a home run.

No fouls, and certainly no strike-outs tolerated by our PM's! Avoid extra innings whenever possible - get the job done efficiently and cost-effectively! Your project is safe with GEOD!

So, now is the time to get your project to first base. Call GEOD at 973-697-2122 to reserve your spot in the lineup.

Ask about special rates on existing Hudson Valley, NY stock photography.

## Hot Commodities: Laser & Subsurface Utility Mapping

Laser scanning and ground penetrating radar techniques have become hot commodities at GEOD over recent months.

**Laser Scanning** Projects have included:  
**Jay Street Station**, Brooklyn, NY on behalf of NYC Transit;

**Morris Av Bridge** Over Morristown Line, Union County, NJ on behalf of the NJDOT; **Five (5) Bridges** over I-295 in New Jersey; and **Vernon Substation**, Queens, NY for Con Edison

**Subsurface Utility** Projects have included:

**Astoria Energy II** Expansion Project in Queens, NY; **ConEd Plant** in Astoria, Queens, NY; **International Delights** project on Brighton Road in Clifton, NJ; and **Other Projects** in Pittsburg, PA and Delaware.



## From the Field: Ongoing Projects and Contract Awards



### Bridge Deck Reconstruction of the Newark Bay-Hudson County Extension

GEOD contracted to provide new low altitude digital to-

pographic mapping for the NJ Turnpike Authority Bridge Deck Reconstruction at the Newark Bay-Hudson County Extension. Supplemental surveys included the location of features not visible in the photography, such as deck joints, posts, fences and guiderails.

Existing piers were located with elevations obtained on the top of the pier and bottom of the girder elevations.

### NYC Department of Design & Construction On-Call Surveying

GEOD's prior on-call term contract award with the NYC DDC for surveying services within the five

boroughs has resulted in numerous projects over the past several months. Recent tasks have GEOD providing aerial mapping and surveying for a 6300 linear ft water main project in Manhattan as well as topographic mapping of the Sheldon Avenue Bluebelt area in Staten Island.



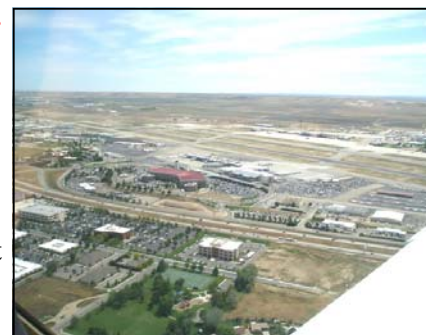
### NJ Turnpike Interchanges 16E - 18E Improvements

GEOD contracted to provide low scale photogrammetric mapping and supplemental surveys to support the design of the NJTA's Widening and Redecking Project for

Interchanges 16E to 18E.

### English Creek Bridge Replacement Project, Atlantic County, NJ.

GEOD was selected to provide aerial photogrammetric mapping for the Atlantic County, NJ project for the replacement of English

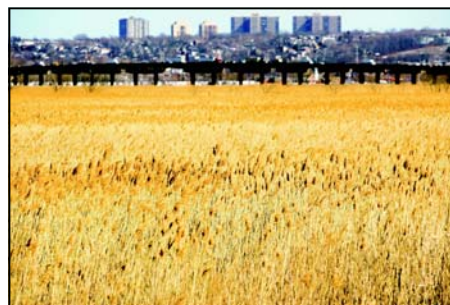


Creek Bridge at Mays Landing, Somers Point Road over English Creek in Egg Harbor Township, Atlantic County, NJ.

Supplemental surveys will include a limited boundary, ground and field edit.

### Stewart Airport, Newburgh, NY

GEOD contracted to provide aerial photogram-



metric survey services for the Port Authority of NY/NJ project to improve operations and safety at Stewart Airport in Newburgh, NY. The

survey included ground control and runway centerline elevations.

### Professional Surveying Services for the Kane Tract Wetland Mitigation Bank, Carlstadt, NJ

GEOD was contracted to provide an aerial topographic survey of the Kane Tract, consisting of approximately 310 acres of land, located in South Hackensack and Carlstadt, NJ as part of a \$6 Million planned natural marshland restoration project. Supplemental field locations, including stream cross-section,

## Awards, Achievements and Items of Interest:

Longtime GEOD employee, **Kevin Hanna**, was recently promoted to the position of Project Manager in charge of Laser Scanning, GPR and Surveying Projects.

With 22 years of diverse surveying experience, Kevin holds a GEOI Surveying Degree from the Bolton Street College of Technology and recently received his B.S. in Surveying Engineering Technology from NJIT.

Among many of GEOD's loyal employees, **Susan Stringfield, C.P.**, was recently honored for 30 years with the company. Sue received her initial

certification as a Certified Photogrammetrist in 1990.

GEOD welcomes **Mike Saperstein, PLS**, and **Susan Bickford Martin** to its Survey Department.

**LAMP (Low Altitude, High Accuracy Photography)**. GEOD's use of this technology has saved numerous survey man-hours on projects such as the Route 3 Bridge Over the Passaic River, the I-287 Bridge Over Route 46, the I-80 Over Berkshire Valley Road and nearly 15 miles of map-



## From the Field: Ongoing Projects And Contract Awards

### NYS DOT Region 11 On-Call Surveying

Recent tasks performed by GEOD under its NYS DOT Region 11 On-Call term contract award for surveying services include Photo and Control Surveys for Route 9A, Battery Place to 61<sup>st</sup> Street in Manhattan and GPS Photo Control Surveys for the Van Wyck Expressway – JFK to Atlantic Avenue in Queens, NY.

### NJDOT Route 17 Bottleneck, Bergen County, NJ

GEOD recently contracted to provide surveying support services for the joint Bergen County and NJDOT Route 17 Bottleneck Alternatives Analysis and Preliminary Engineering study necessary for the planned improvements to advance. GEOD will obtain aerial photography, establish primary control and provide topographic mapping.

### Photogrammetric Mapping for Route 4 and Palisades Avenue Bridge, Teaneck, NJ

GEOD is providing new aerial photography, primary and supplemental photo control for the NJDOT project to replace the Palisades Avenue Bridge in Teaneck, NJ.

### NYC Transit On-Call Surveying Contract

Since award of GEOD's On-Call Surveying Contract with NYC Transit, it has performed over 75 surveying projects at bus depots, subway stations and yards, rail lines and vent plants. Types of surveys



## GEOD's Spring Puzzle: Measurements

You are standing at a well with two pots. One holds **seven** quarts and the other holds **five** quarts. Neither pot has any markings so the only amount of water you can measure accurately is when a pot is full.



How can you measure out exactly four quarts?



Answers should be submitted to: [marketing@geodcorp.com](mailto:marketing@geodcorp.com) not later than April 24, 2009.

The winner will be chosen from a random drawing of all correct answers and notified by email on April 27, 2009 when the solution will also be posted on GEOD's website.

The lucky winner will receive a \$200.00 Best Buy Gift Certificate.



---

**GEOD: PROVIDING LAND SURVEYING & AERIAL MAPPING SERVICES SINCE 1961**

---



**GEOD** CORPORATION  
AERIAL PHOTOGRAMMETRY • LAND SURVEYING

24 Kanouse Road  
Newfoundland, NJ 07435

Phone: 973-697-2122

Fax: 973-838-6433

Email: [geod@geodcorp.com](mailto:geod@geodcorp.com)

[www.geodcorp.com](http://www.geodcorp.com)