



**GEOD** CORPORATION

AERIAL PHOTOGRAMMETRY • LAND SURVEYING

# INNOVATOR

Fall, 2008



## GEOD Offers You:

- Photogrammetric Mapping
- Land & Engineering Surveying
- Construction Surveys
- GIS Base Mapping
- Subsurface Utility Mapping

## Inside this issue:

NYS Thruway	2
Concord Entertainment City	2
Subsurface Utility Mapping	2
GSP Widening Continued	3
Employees News	3
I-280 Over Whippany River	3
GEOD's Puzzle	4

## GEOD Team Once Again Rushes Forward



As it has for nearly 50 years, the GEOD Aerial Photography Team is once again preparing for the upcoming Fall flying season.

Ideal conditions generally begin in early November in the New England states and late November for areas south of Albany, New York and into New Jersey.

As a result, GEOD project managers ready their teams to "grab the ball and run with it" so that your project needs score a perfect touchdown: completed quickly and precisely, on time and within budget.

A well-qualified, extensively experienced professional staff readies itself to aid your project—no fumbles allowed!

Schedule your project early— as ever, fly now, map later is always an option at GEOD.

Call GEOD at 973-697-2122 and outline your aerial photography needs. Let us suggest the possibilities.

And remember, GEOD is still offering **special rates on its stock photography that covers nearly 1200 square miles in the Greater Hudson Valley region!**

The GEOD Team is ready to break its huddle and rush forward!

## GEOD Joins NJTA Project Team to Widen the Garden State Parkway MP83 – MP99

GEOD recently contracted to provide the most advanced photogrammetric and survey techniques available to obtain field data for the NJTA project to widen MP 83 to MP 99 representing approximately 16 miles of the Garden State Parkway.

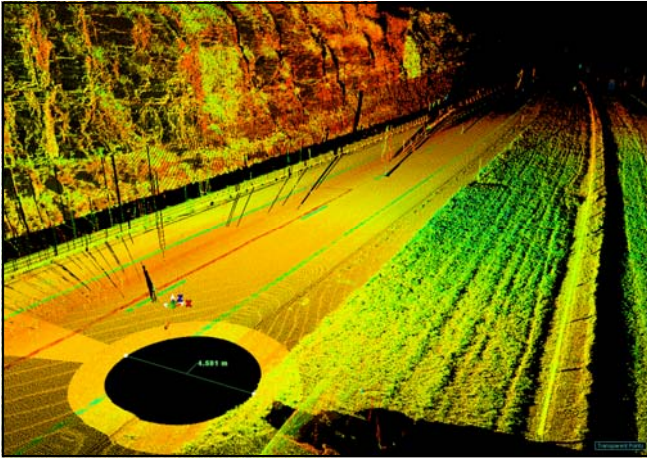
Through the combined use of aerial photography, GPS surveys and reflectorless total stations, GEOD will obtain elevations and locations of existing features within the project limits, including roadways and ramps, eliminating the need for most

lane closures and personnel crossing lanes of traffic. Services include establishing primary and photo control as well as setting bench marks and control traverse points which will later assist in the field edit, bridge and

**(continued on page 3)**



## NYS Thruway MP 115.35 -MP 116.1, Rock Survey Using Laser Scanning



NYS Thruway Laser Scan

One of the numerous projects GEOD has completed under its on-call contract with the NYS Thruway Authority, was to provide both the land surveying and laser scanning services required to deliver a Digital Terrain Model to support the Thruway's Rock Cut Project from MP 115.35 to MP 116.1.

Services included setting a baseline tied to existing control, laser scanning of the rock face and establishing existing ROW monuments. A DTM of the rock face and surrounding area was provided in accordance with the NY Thruway CADD standards.

“...surveying services for the new \$1.5 billion dollar Concord Entertainment City...”

## Surveying Services at Concord Entertainment City, Thompson, NY

GEOD was contracted to provide surveying services for the new \$1.5 billion dollar Concord Entertainment City in Thompson, NY.

The resort will include a move by the nearby Monticello racetrack and its slot machines,

construction of several hundred hotel rooms and convention space as well as 500 vacation homes. Among the recreational amenities will be golf courses and tennis courts and facilities for hiking and water sports.

GEOD services have included establishing control, locating grid coordinates and elevations and preparing individual test pit topos to include monitoring wells, borings, basins, silt fence, drainage and water line coordinates.

## Subsurface Utility Mapping Projects Continue to Rise at GEOD



Ground Penetrating Radar

The increasing demand for GEOD's ground penetrating radar and electro magnetic location services has continued its steady upward movement over recent months throughout the tri-state area.

The latest projects being completed for GEOD clients include a Sunoco Station in Pittsburgh, PA, the Arthur Kill Con Ed Station in Staten Island, NY and at multiple sites for the New York City Depart-

ment of Design and Construction. GEOD is supporting the NYCDDC's Upgrade, Replacement and Decommission of Storage Tanks and Remediation Contamination Project.

## Garden State Parkway Widening Project, MP 83 - MP 99

(continued from page 1)

utility location survey, cross sections, and other required locations, specifically in the area impacted by the roadway widening.

GEOD will provide topographic mapping by collecting 3D breaklines to include pavement edges, edge of paved shoulders, curb lines and lane lines. The files will later be

merged with the field elevation data to depict the shape of the ground.

A field edit to locate features not visible in the photography will be performed when the mapping is complete.

Supplemental surveys will be performed to obtain drainage, structure, stream and roadway crossing information.



Garden State Parkway Project

## Project Growth Leads to Employee Expansion at GEOD

Marie J. Lewis has joined GEOD as a Business Development Manager responsible for Aerial Mapping and Survey Services for our NJ, NY, PA and CT operations.

Marie's background spans over 20 years with experience in engineering, survey, mapping and construction. She has a degree in Marketing and is an active member of the American Society of

Highway Engineers in NJ and NY.

Please contact Marie at (908) 797-6682 or [mlewis@geodcorp.com](mailto:mlewis@geodcorp.com) to speak with her regarding GEOD's services.

"Congratulations to Project Manager, Ray Feldman, on adding a New York PLS license to his already long list of professional credentials."

## I-280 over Whippany River, Deck Replacement, Parsippany-Troy Hills, NJ

GEOD contracted to provide low altitude photogrammetric mapping of I-280 over the Whippany River in support of the NJDOT's Deck Replacement project in Parsippany-Troy Hills, NJ. Services included establishing control, obtaining new

black and white photography and providing a detailed bridge field survey. The area included approximately 3250 ft on either side of the New Road crossing of I-280 from the edge of its shoulder in the WB roadway to the edge of its shoulder in

the EB roadway including the I-280 Bridge over the Whippany River. All work was performed by skilled technicians and licensed professionals in accordance with the NJDOT Standards and Procedures Manual.



I-280 Over Whippany River

