



GEOD CORPORATION

AERIAL PHOTOGRAMMETRY • LAND SURVEYING

INNOVATOR

Fall's Foliage



Regardless of how volatile the summer weather may have been, most of us in the Northeast are sad to see it go.

At GEOD, however, the beauty of the fall colors is our alert that the "Flying Season" is quickly approaching. Once those leaves have drifted to the ground, conditions are prime for aerial photography projects. This is generally in early November in New England and late November for the areas south of Albany, NY and into New Jersey.

And, if this timing doesn't completely suit your project needs, with GEOD you can always fly and map in separate stages thus spreading project costs. **Call GEOD Project Managers at any time to discuss the possibilities.**

GEOD's use of Low-Altitude Mapping and Photogrammetric (LAMP) technology can provide you with precise detail and accuracy.

To save extra dollars, remember to ask about GEOD's stock photography of the entire Hudson Valley, NY Area. Call GEOD now to assist in your project planning and aerial mapping needs. 973-697-2122.

GEOD's Puzzle

Recently, as part of GEOD's Corporate team building program, Stan and Paul, Jr. were paddling their canoe along the Hackensack River.

In the morning, they managed to row upstream at an average speed of two (2) miles per hour. They then stopped for a spot of lunch and a nice rest. The afternoon's pace was a little easier as

they were now rowing downstream. They managed an average speed of four (4) miles an hour. The morning trip took them three (3) hours longer than the afternoon.

The question: "How many miles did they paddle upstream?" Answers should be submitted to: marketing@geodcorp.com. not later than 2010. The winner will



be chosen from a random drawing of all correct answers and notified by email on

2010 when the solution will also be posted on GEOD's website.

The lucky winner will receive a \$200.00 Best Buy Gift Certificate. HAVE FUN!

GEOD Offers You:

- Photogrammetric Mapping
- Land & Engineering Surveying
- Construction Surveys
- GIS Base Mapping
- Subsurface Utility Mapping

Inside This Issue

North Jersey District Water Supply Dams	2
Tappan Zee Bridge	2
Floyd Bennett Field	2
Amtrak-Rt. 27	2
Subsurface Utility Locating Projects	3
Mill Creek, Staten Island	3
Hunts Point Station	3
GEOD Celebrates 50 Years	4

From The Field:

Laser Scanning the Tappan Zee

GEOD was recently awarded the contract to provide a combination of surveying and laser scanning services to support the re-decking construction of the Tappan Zee Bridge. Specific services include establishing horizontal and vertical control, surveying all features to be constructed and providing final as-builts. High definition scanning is being used for above and below the deck. Scanned dimensional data will be used by the fabricators for the precast decking.

North Jersey District Water Supply Commission Dams

GEOD contracted to provide various surveying services at nine NJDWSC owned dams: three (3) Green Swamp Dams, the Wolf Den Dam, Overflow Weir, Raymond Dam, Midvale

Dam, Furnace Road Dam and the Monksville Dam in support of the North Jersey District Water Supply Commission's Improvement Project. Services include: locating, establishing and installing monuments and preparing topographic surveys of each project site.

Floyd Bennett Field, Brooklyn

GEOD recently contracted to provide survey support for the United States Marine Corps Reserve Center at Floyd Bennett Field in Brooklyn, NY. The purpose of the boundary survey is to obtain legal descriptions of the property for use in establishing boundaries, exchanging properties and determining legislative jurisdiction types within the proposed limits of existing and future property boundaries. GEOD performed complete boundary surveys of seven separate locations providing legal descriptions including bearings and distances of the perimeter of each parcel or sub-parcel.

Amtrak Along Route 27, Woodbridge

GEOD was contracted to survey the Amtrak property along Route 27 in Woodbridge, NJ for the NJDOT project to establish the common right of way line between the NJDOT and Amtrak. Services have included: research, office analysis and calculations to establish the right of way, field survey of the Amtrak property to provide a utility and topographic survey of the area between Route 27 and the first set of tracks, with plan preparation, and right of way line stake out for a 2.5 mile distance. All mapping was delivered in MicroStation digital and hard copy format conforming to NJDOT CAD Standards.



Laser Scanning the Tappan Zee Bridge

...survey support for the United States Marine Corps at Floyd Bennett Field....



Monksville Dam

From The Field:

Subsurface Utility Projects

GEOD's most recent subsurface utility locating projects have required the use of either ground penetrating radar or electro-magnetic scoping or, as is often the case, a combination of both. Some recent project sites have included:

Six proposed camera pole locations at the Coney Island Rail Yard, Brooklyn, NY;

Numerous locations at the Phase II Astoria Energy Expansion Project in Astoria, NY;

Location of a steam main in Bronx, NY; and

Ten different locations to mark out water, electric and gas lines at the Woodbury Commons Mall in Woodbury, NY.

The most common uses for Subsurface Utility Locating Services Include:

Environmental Design & Remediation

Water & Sewer Projects

Highways, Roads & Bridges

New Construction, and

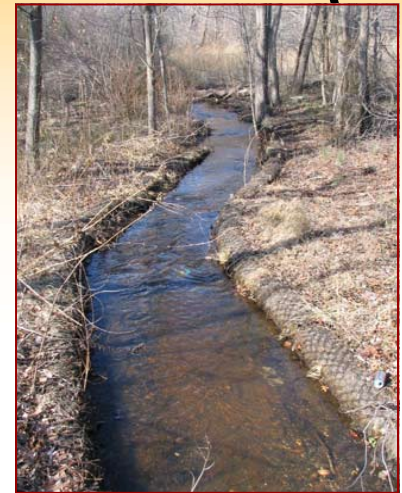
Building/Site Expansions.

Mill Creek, Staten Island

Under its On-Call Term Contract for surveying services with the NYC DDC, GEOD is providing a topographic and property line survey of 141,000 square feet of the area east of Page Avenue over Mill Creek south to the SIRT Line at Pan Street, Staten Island, NY in support of the NYC DEP's drainage plan to control stormwater in the area. All subsurface, overhead and/or surface facilities interfacing with the project area were depicted on the mapping. Deliverables included an Overall Plan Drawing, a Surface Point Database and a Surface Model in electronic CAD format consistent with the DDC's Standards and Specifications.

Hunts Point Station, NY

Under GEOD's On-Call contract for Survey and Mapping Services with New York City Transit, we were asked to provide a property boundary line of Monsignor Raul Del Valle Square in Bronx, NY for purposes of establishing a horizontal and vertical stairway easement for the Hunts Point Station. Services included: establishing control down stairway to Station level, records research and supplemental field survey. All physical improvements, such as buildings, sidewalks, curbs, fences and the like, were located. All mapping was provided in MicroStation digital format, conforming to NYCTA CAD Standards.



Mill Creek, Staten Island

...subsurface utility projects continue to be active at GEOD.



Hunts Point Station

GEOD Celebrates 50th Year

The year is 1961: Paul J. Emilius, Sr. makes the decision that in the best interests of his growing family and career direction, it is time for him to “strike out on his own”. With over ten years of practical experience in the surveying field, Paul is confident of future success. As a result of that courage, determination and foresight: **GEOD is born!**

In 1972, Paul is joined by Stan Palinski, currently a Vice President at GEOD, who supplemented the company resume by specializing in aerial photogrammetry. Emilius sons, John (now GEOD’s President), Paul, Jr. and later Chris, joined GEOD’s ranks. This team assured future success by developing the company into the diverse three branch entity that it is today.

GEOD’s focus on knowledgeable, professional and reliable staff, state-of-the-art equipment and overall pride in quality performance has enhanced its foundation to include land surveying, aerial photogrammetry, laser scanning and subsurface utility markouts and mapping.

GEOD’s regularly services clients which include both large and small public and private sector clients.



Congratulations, GEOD, on 50 Years, and thanks to everyone who has contributed to its success.

Providing Land Surveying and Aerial Mapping Since 1961



**24 Kanouse Road
Newfoundland, NJ 07435**

**Phone: 973-697-2122
Fax: 973-838-6433**